

LEGEND
 ● 1/2" IRON ROD FOUND
 ○ 1/2" IRON ROD SET
 ⊙ IRON PIPE FOUND
 ⊖ CONC. MON. FOUND

BROOKHOLLOW CLUB ESTATES
 PHASE ONE
 VOL. 5, PG. 515-A

SCALE: 1"=100'
 MARCH 1998
 GUADALUPE COUNTY, TX

BROOKHOLLOW CLUB ESTATES
 PHASE TWO
 VOL. 5, PG. 16-A

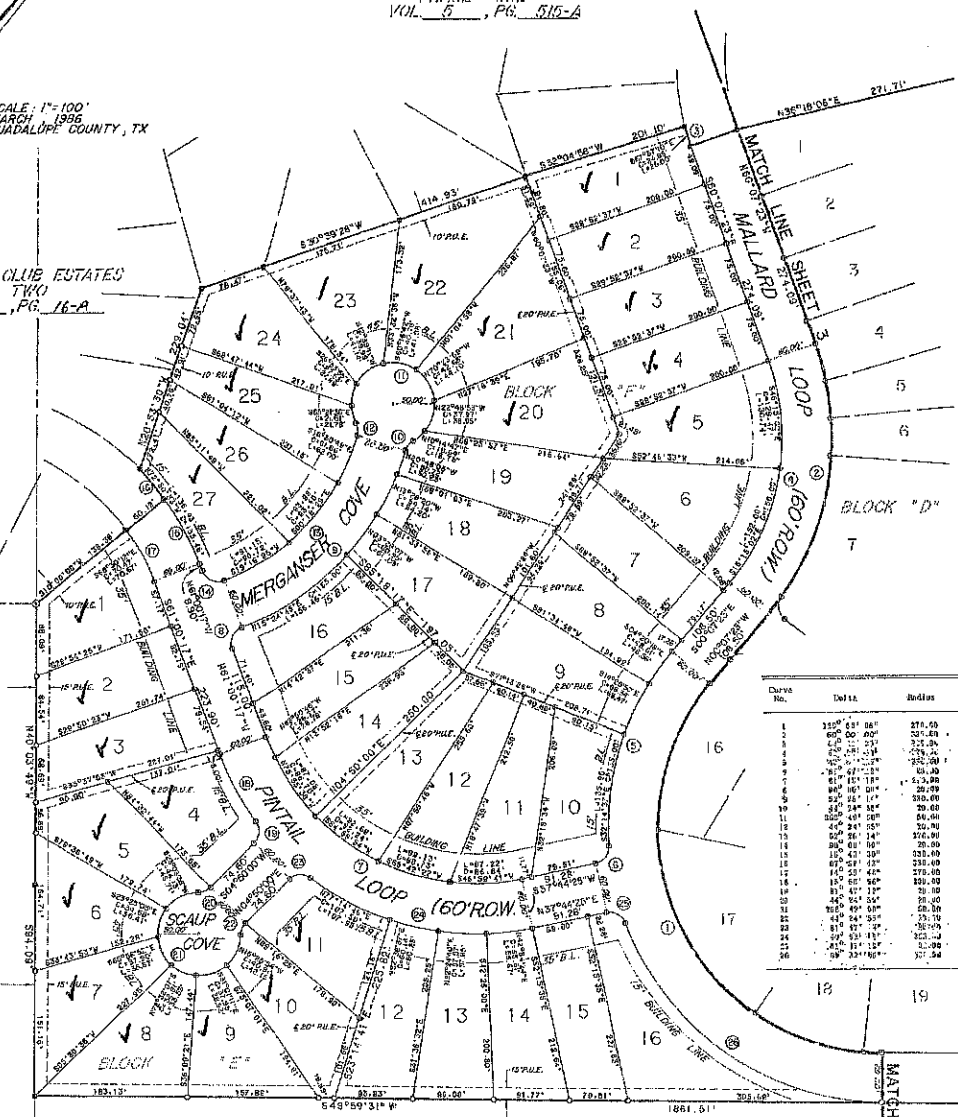
ANDREW MITCHELL SURVEY NO. 62
 ABSTRACT NO. 220

ROBERTA P. CHERISHAW
 VOL. 712, PG. 687

VETERANS LAND BOARD STATE OF TEXAS
 11.00 AC.
 VOL. 692, PG. 727

S.A. & M.G. R.R. SURVEY
 ABSTRACT NO. 308

A.



COORD. DATA

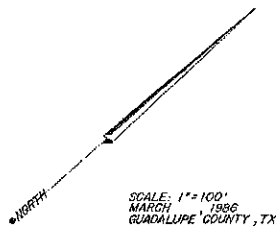
Date	Delta	Radius	Length	Chord	Tan	Ch. Bearing
1	350° 00' 00"	270.00	615.00	480.00	375.00	N 60° 00' 00" W
2	300° 00' 00"	270.00	519.61	403.23	316.52	S 30° 00' 00" E
3	270° 00' 00"	270.00	270.00	270.00	0.00	S 90° 00' 00" E
4	240° 00' 00"	270.00	171.77	135.00	-135.00	S 60° 00' 00" E
5	210° 00' 00"	270.00	85.98	65.25	-65.25	S 30° 00' 00" E
6	180° 00' 00"	270.00	27.00	27.00	-27.00	S 90° 00' 00" W
7	150° 00' 00"	270.00	-85.98	-65.25	65.25	N 30° 00' 00" W
8	120° 00' 00"	270.00	-171.77	-135.00	135.00	N 60° 00' 00" W
9	90° 00' 00"	270.00	-270.00	-270.00	0.00	N 90° 00' 00" W
10	60° 00' 00"	270.00	-519.61	-403.23	316.52	N 30° 00' 00" W
11	30° 00' 00"	270.00	-615.00	-480.00	375.00	N 60° 00' 00" W
12	00° 00' 00"	270.00	-519.61	-403.23	316.52	N 30° 00' 00" E
13	30° 00' 00"	270.00	-615.00	-480.00	375.00	N 60° 00' 00" E
14	60° 00' 00"	270.00	-519.61	-403.23	316.52	N 30° 00' 00" E
15	90° 00' 00"	270.00	-270.00	-270.00	0.00	N 90° 00' 00" E
16	120° 00' 00"	270.00	85.98	65.25	65.25	N 30° 00' 00" E
17	150° 00' 00"	270.00	171.77	135.00	135.00	N 60° 00' 00" E
18	180° 00' 00"	270.00	270.00	270.00	0.00	N 90° 00' 00" E
19	210° 00' 00"	270.00	270.00	270.00	0.00	N 30° 00' 00" W
20	240° 00' 00"	270.00	171.77	135.00	135.00	N 60° 00' 00" W
21	270° 00' 00"	270.00	85.98	65.25	65.25	N 30° 00' 00" W
22	300° 00' 00"	270.00	171.77	135.00	135.00	N 60° 00' 00" W
23	330° 00' 00"	270.00	270.00	270.00	0.00	N 90° 00' 00" W
24	360° 00' 00"	270.00	270.00	270.00	0.00	N 0° 00' 00" W



ESPEY, HUSTON & ASSOCIATES, INC.
 Engineering & Environmental Consultants
 322 W. HOPKINS SAN MARCOS, TEXAS 78666
 (512) 396-7070

BROOKHOLLOW CLUB ESTATES, PHASE THREE

BROOKHOLLOW CLUB ESTATES
 PHASE ONE
 VOL. 5, PG. 515-A

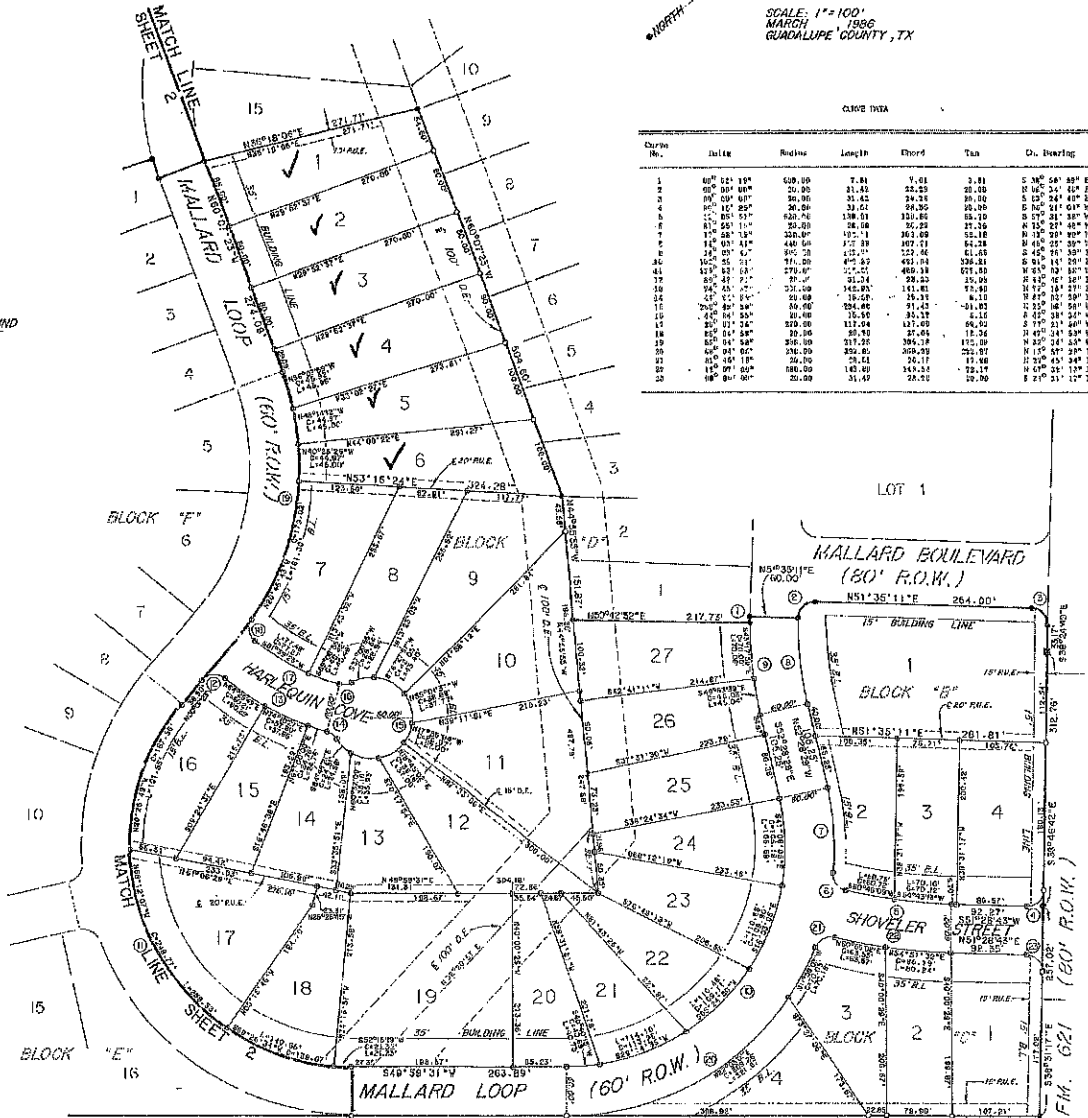


SCALE: 1" = 100'
 MARCH
 GUADALUPE COUNTY, TX

CURVE DATA

Curve No.	Delta	Radius	Length	Chord	Tan	D. Bearing
1	00° 02' 19"	629.00	7.81	7.81	3.81	S 89° 58' 00" E
2	00° 00' 00"	20.00	31.42	31.23	25.00	N 00° 00' 00" E
3	00° 00' 00"	30.00	31.42	31.23	30.00	S 00° 00' 00" E
4	00° 10' 29"	20.00	31.61	31.35	25.00	S 00° 10' 29" E
5	00° 05' 51"	629.00	139.03	139.03	53.10	S 00° 05' 51" E
6	01° 59' 11"	20.00	38.00	37.79	31.26	S 01° 59' 11" E
7	01° 58' 13"	329.00	137.1	137.00	53.10	S 01° 58' 13" E
8	01° 03' 43"	440.00	217.39	217.31	64.28	S 01° 03' 43" E
9	01° 00' 00"	30.00	31.42	31.23	25.00	S 01° 00' 00" E
10	00° 45' 21"	710.00	495.67	495.54	326.21	S 00° 45' 21" E
11	00° 00' 00"	30.00	31.42	31.23	25.00	S 00° 00' 00" E
12	00° 00' 00"	30.00	31.42	31.23	25.00	S 00° 00' 00" E
13	00° 45' 21"	710.00	495.67	495.54	326.21	S 00° 45' 21" E
14	00° 00' 00"	30.00	31.42	31.23	25.00	S 00° 00' 00" E
15	00° 00' 00"	30.00	31.42	31.23	25.00	S 00° 00' 00" E
16	00° 00' 00"	30.00	31.42	31.23	25.00	S 00° 00' 00" E
17	00° 00' 00"	30.00	31.42	31.23	25.00	S 00° 00' 00" E
18	00° 00' 00"	30.00	31.42	31.23	25.00	S 00° 00' 00" E
19	00° 00' 00"	30.00	31.42	31.23	25.00	S 00° 00' 00" E
20	00° 00' 00"	30.00	31.42	31.23	25.00	S 00° 00' 00" E
21	00° 00' 00"	30.00	31.42	31.23	25.00	S 00° 00' 00" E
22	00° 00' 00"	30.00	31.42	31.23	25.00	S 00° 00' 00" E
23	00° 00' 00"	30.00	31.42	31.23	25.00	S 00° 00' 00" E
24	00° 00' 00"	30.00	31.42	31.23	25.00	S 00° 00' 00" E
25	00° 00' 00"	30.00	31.42	31.23	25.00	S 00° 00' 00" E
26	00° 00' 00"	30.00	31.42	31.23	25.00	S 00° 00' 00" E
27	00° 00' 00"	30.00	31.42	31.23	25.00	S 00° 00' 00" E

LEGEND
 ● 1/2" IRON ROD FOUND
 ○ 1/2" IRON ROD SET
 ○ CONC. MON. FOUND

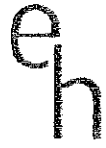


VETERANS LAND BOARD STATE OF TEXAS
 11.00 AC.
 VOL. 692, PG. 787

S.A. & M.G. R.R. SURVEY
 ABSTRACT NO. 308

FM 621

FM 621 (80' R.O.W.)



ESPEY, HUSTON & ASSOCIATES, INC.
 Engineering & Environmental Consultants
 322 W. HOPKINS SAN MARCOS, TEXAS 78666
 (512) 396-7070

BROOKHOLLOW CLUB ESTATES, PHASE THREE